



Intelligent, Intuitive, Innovative



**Certegra™**  
© Point of Care

**VirtualCare™**  
Remote Support

**MEDRAD®** Stellant™  
CT Injection System

# MEDRAD® Stellant™

## CT Injection System

### CT Imaging Solutions start here...

The MEDRAD® Stellant™ D Dual Syringe CT Injection System is reliable and easy-to-use. It is an integral piece of Bayer's CT imaging solution which also includes the Radimetrics™ Enterprise Platform, Quality Consumables, and Services (Extended warranties including VirtualCare™ Remote Support).

Protocol options for the most advanced clinical applications:

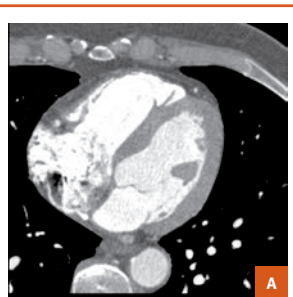
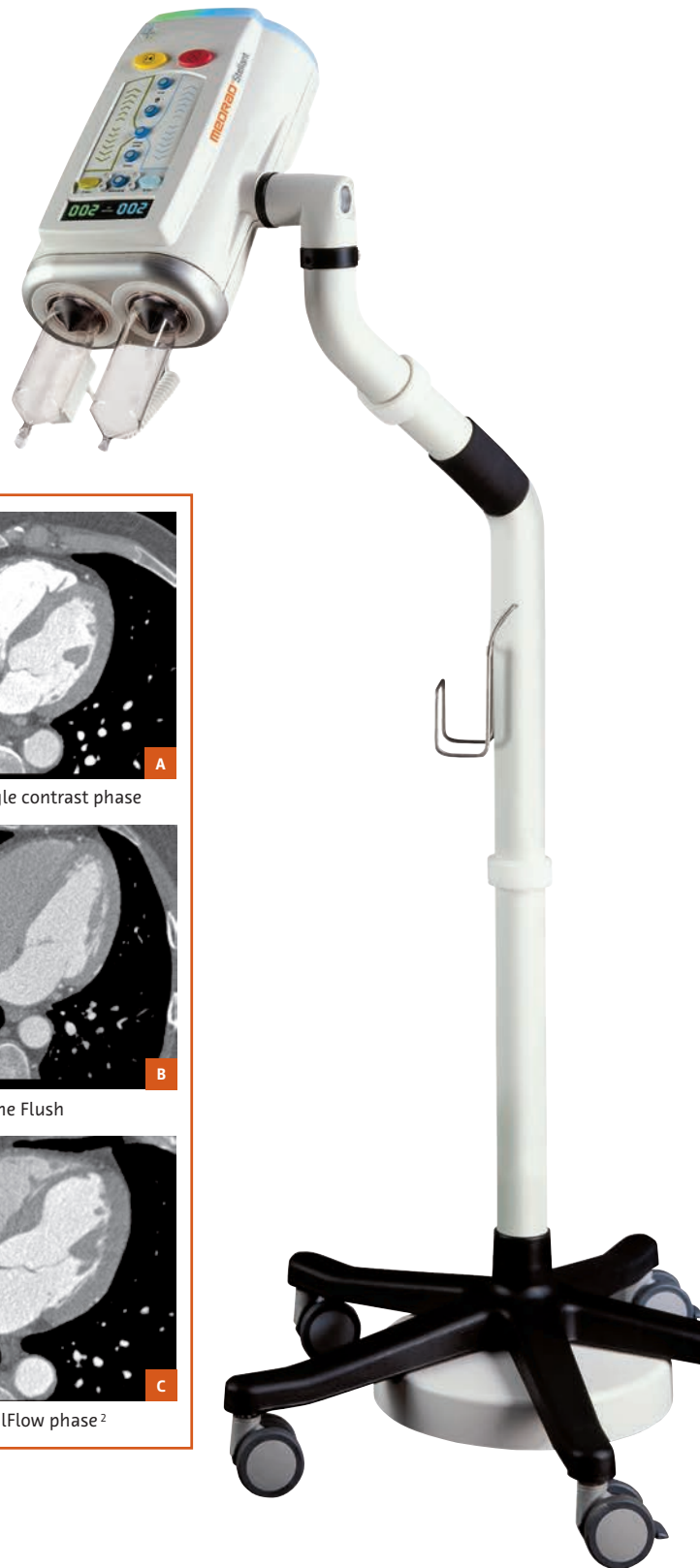
- Designed for complex contrast enhanced CT protocols
- Creates a tight contrast bolus
- Enables precisely timed contrast delivery

### Clinical benefits of injecting contrast and saline at different ratios to visualize the whole heart

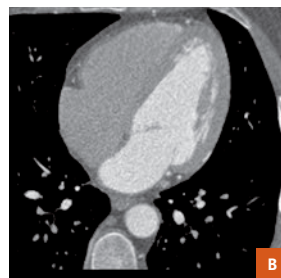
Clinical research has shown that simultaneous injection of contrast and saline, in user-selected ratios, can<sup>1</sup>:

- Provide more uniform attenuation of the right and left ventricles
- Minimize artifacts by achieving proper attenuation levels
- Visualize the right coronary arteries and right ventricles in a single study by achieving more uniform attenuation

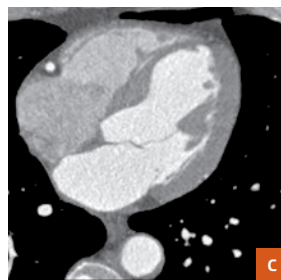
**DualFlow can provide the ability to perform simultaneous injection of contrast and saline with the MEDRAD® Stellant™ D Injection System**



A. With single contrast phase



B. With Saline Flush



C. With DualFlow phase<sup>2</sup>

## The MEDRAD® Stellant™ D efficiently increases throughput with:

- Snap-on / twist-off syringe design
- Automatic plunger advance and retract when attaching and detaching syringes
- Automatic filling and priming
- Multi-phase programming (and patented Hold/Pause feature)
- Integrated saline test inject
- Programmable pressure limit



MEDRAD® Stellant™ Dual Saline Syringe Kit (SDS-CTP-SCS) includes a small spike for contrast & a longer, vented spike for saline

## VirtualCare™ Remote Support Capabilities

With the inclusion of a VirtualCare™ Remote Support system, alerts are monitored and resolved proactively. That's forward thinking you can't afford to miss out on.



Certegra™ Workstation for MEDRAD® Stellant™ D Injection System  
The command center for intelligent CT Contrast Dose Management Solutions.

## Certegra™ Workstation highlights:

- Informatics ready platform – enables interconnectivity between your scanner, the MEDRAD® Stellant™ D Dual Head Injector, PACS, RIS, & Speech Recognition Systems
- Enhanced protocol manager
- Ability to add Certegra™ P3T™ 2.0 Software to drive protocol standardization through new capabilities including presets for radiologist-preferred protocols & the ability to save and recall P3T™ software protocols

Certegra™ Workstation is the cornerstone of the Bayer Certegra™ @ Point of Care application, the industry's first<sup>3</sup> Contrast Dose Management Solution. The data you need is centrally mobilized and instantly available.

1. Kerl JM, Ravenel JG, Nguyen SA, et al. "Right heart: split-bolus injection of diluted contrast medium for visualization at coronary CT angiography", *Radiology*. 2008;247:356-364.  
2. Jensen, CT, "Dual Flow Contrast Injection for Coronary CTA Improves Visualization of the Right Heart", *NASCI Abstract # 05-A-69-NASCI*.  
3. Reference on file.

## System Specifications

### Injection Specifications

<b>Flow Rate (range &amp; increments)</b>	0.1 to 10 mL/sec in 0.1 mL increments
<b>Volume (range &amp; increments)</b>	1 mL to syringe capacity in 1 mL increments
<b>Programmable Pressure Limit (psi/kPa)</b>	200 mL syringe: 325 psi, 2241 kPa
<b>Scan Delay</b>	0-300 seconds (5 minutes) in 1 second increments
<b>Pause</b>	1-900 seconds (15 minutes) in 1 second increments
<b>Hold</b>	Maximum HOLD time is 20 minutes
<b>Syringes (Volume capacity)</b>	200 mL sterile disposable syringe
<b>Maximum Number of Phases</b>	6

### Miscellaneous Specifications

<b>Electrical Requirements (VAC/Hz)</b>	100-240 VAC, 50/60 Hz, 300 Volts-AMPs
<b>Syringe Heat Maintainer Range</b>	95 degrees F +/-9 degrees 35 degrees C +/-5 degrees
<b>Head Mounting Options</b>	Overhead Counterpoise System or Floor Pedestal (Floor Pedestal includes an Integral IV Pole)
<b>DualFlow Saline</b>	Simultaneous Injection of Contrast and Saline
<b>MEDRAD® XDS™ Extravasation Detection System</b>	Extravasation Detector - Extravasation Detection Device
<b>Certegra™ P3T™ Cardiac Application</b>	Patient-specific Injection Protocols for Cardiac CTA
<b>Certegra™ P3T™ Abdomen Application</b>	Abdominal Protocol Optimization Software
<b>Certegra™ P3T™ PA Application</b>	Pulmonary Angiography Protocol Optimization Software

### Mechanical Specifications

	Height	Width	Depth	Weight
Dual Injector Head	6.1" (15.5 cm)	12.1" (30.7 cm)	14.5" (36.8 cm)	17.9 lb (8.1 kg) <i>(without syringe)</i>
Base Unit	11.5" (29.2 cm)	11.0" (27.9 cm)	8.8" (22.2 cm)	13.6 lb (6.2 kg)
Certegra™ Workstation (CWS)	12.71" (32.28 cm)	15.58" (39.58 cm)	10.5" (26.67 cm)	17.6 lb (8.0 kg)



### Equipment Service by Bayer

#### Backed by Bayer reliability, support and service

- Legendary product reliability
- Exceptional after-sales support
- Knowledgeable and reliable technical service
- Ask about Bayer's Predictive Maintenance Programs and Extended Warranties




Clear Direction.  From Diagnosis to Care.

All rights reserved. This publication or parts thereof may not be translated into other languages or reproduced in any form mechanical or electronic (including photocopying, tape recording, microcopying) or stored in a data carrier or computer system without written consent of Bayer Pharma AG. Bayer reserves the right to modify the specifications and features described herein, or discontinue manufacture of the product described at any time without prior notice or obligation. Please contact your authorized Bayer representative for the most current information. Bayer, the Bayer Cross, MEDRAD®, Stellant™, Certegra™, VirtualCare™, Radimetrics™, XDS™, and P3T™ are trademarks of the Bayer group of companies. © 2012-2014, 2016 Bayer



Bayer Pharma AG  
Street or Building  
City, Country

More information on  
[radiology.bayer.com](http://radiology.bayer.com)

 Bayer Medical Care Inc.  
1 Bayer Drive  
Indianola, PA 15051 USA  
Customer Service/Orders  
1-800-633-7231  
Customer Service Fax  
1-412-767-4120